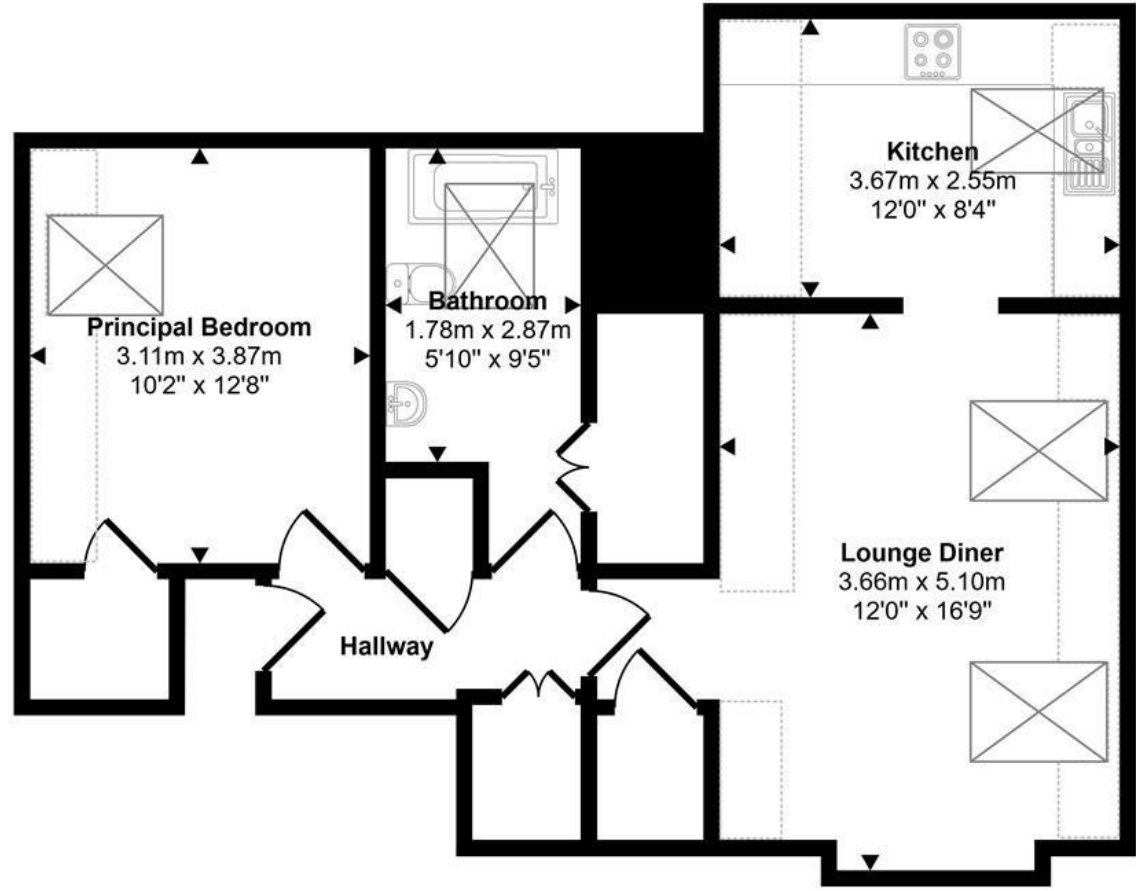




Surrey Street | Norwich | NR1
 Guide Price £165,000

Approx Gross Internal Area
 60 sq m / 648 sq ft



Floorplan

Denotes head height below 1.5m

This floorplan is only for illustrative purposes and is not to scale. Measurements of rooms, doors, windows, and any items are approximate and no responsibility is taken for any error, omission or mis-statement. Icons of items such as bathroom suites are representations only and may not look like the real items. Made with Made Snappy 360.

Energy Efficiency Rating		
	Current	Potential
Very energy efficient - lower running costs		
(92 plus) A		
(81-91) B		
(69-80) C		
(55-68) D		
(39-54) E		
(21-38) F		
(1-20) G		
Not energy efficient - higher running costs		
		78
	53	
England & Wales	EU Directive 2002/91/EC	

Disclaimer – In accordance with the Property Misdescriptions Act, the company gives notice that all descriptions, references to condition, necessary permissions for use and other details are given in good faith and believed to be correct, but any intending lessees do not rely on them as statements of fact, but must satisfy themselves by inspection or other means, as to their accuracy.

abbotFox presents this spacious, top floor apartment. Set within the heart of Norwich City Centre, this home affords an unrivalled convenience, and represents an ideal opportunity for any buyer looking to enjoy City living. Set on the top floor of this stunning Grade II listed building, the apartment itself offers a bright and spacious feel throughout, with neatly arranged accommodation comprising; entrance hall, lounge diner, kitchen breakfast room, double bedroom and family bathroom. An ideal home for any first time buyer or buy-to-let investor, an internal viewing comes highly recommended to appreciate the space on offer.

Guide price £165,000 - £175,000

